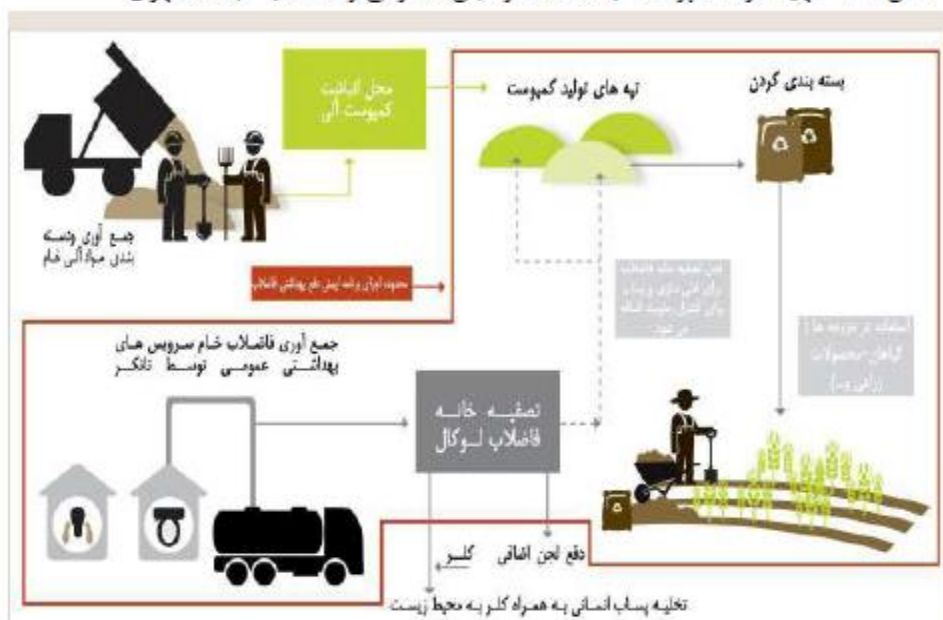


Drawing the system map
<p>Drawing the system map</p> <p>In this part, the full map of the scope of the program is given. The location, route and discharge of all types of streams and types of wastewater (collection network, absorbent wells and septic tanks and their sludge disposal, industrial and agricultural wastewater) of running water, treatment plants, types of uses, etc. should specified on the map. .</p>
<p>Determining the type and characteristics of wastewater</p> <p>In this section, the characteristics of the type of wastewater (domestic, commercial, and industrial, agricultural, pharmaceutical) and compliance with the standard at the point of contact with people, society, discharge into the environment and reuse mentioned.</p>
<p>Identification of groups exposed to potential exposure</p> <p>In this part, according to the qualitative characteristics of the types of wastewater (physical, chemical and biological) and the place of exposure (city surface, treatment plant, discharge to the environment and reuse), exposed groups are identified.</p>

## ابزار ۱-۲ طبقه بندی گروه های در معرض خطر

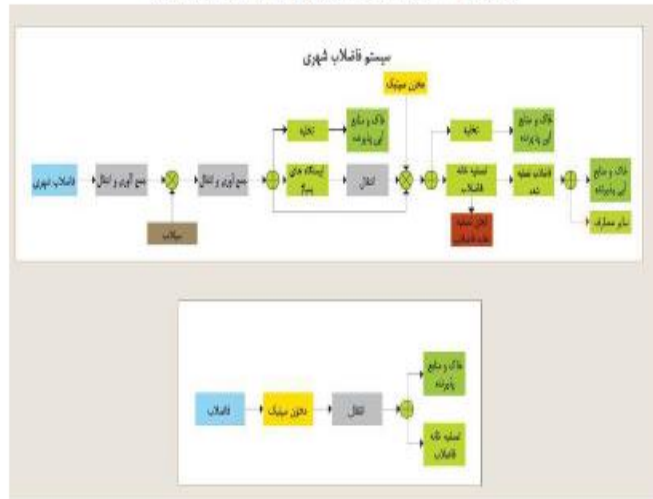
مثال ۱-۲ تهیه کود کمپوست با استفاده از لجن مدفوعی و فاضلاب جامد شهری



## مثال ۲-۲ ترسیم نقشه منابع چندگانه فاضلاب، پرتغال



ادامه مثال ۲-۲ ترسیم نقشه منابع چندگانه فاضلاب، پرتغال



مثال ۳-۲ سیستم مدیریت لجن مدفوعی، قزلباشین

